



What is the Middle Years Programme (IB-MYP)?

The **IB Middle Years Programme** aims to develop active learners and internationally minded young people who can empathize with others and pursue lives of purpose and meaning.

The programme empowers students to inquire into a wide range of issues and ideas of significance locally, nationally and globally. The result is young people who are creative, critical and reflective thinkers.

<http://www.ibo.org>



IB Mission Statement

The International Baccalaureate aims to develop inquiring, knowledgeable and caring young people who help to create a better and more peaceful world through intercultural understanding and respect.

To this end the organization works with schools, governments and international organizations to develop challenging programmes of international education and rigorous assessment.

These programmes encourage students across the world to become active, compassionate and lifelong learners who understand that other people, with their differences, can also be right.

CLPMS Principal
Matt Ellis

970-488-7400

matte@psdschools.org

CLPMS Assistant Principal
& IB Coordinator

Katy Sayers

970-488-7400

ksayers@psdschools.org

Cache La Poudre
Middle School
3515 W County Road 54G
La Porte, CO 80535
970-488-7400

<http://www.psdschools.org/clpms>



Cache La Poudre Middle School

an IB World School



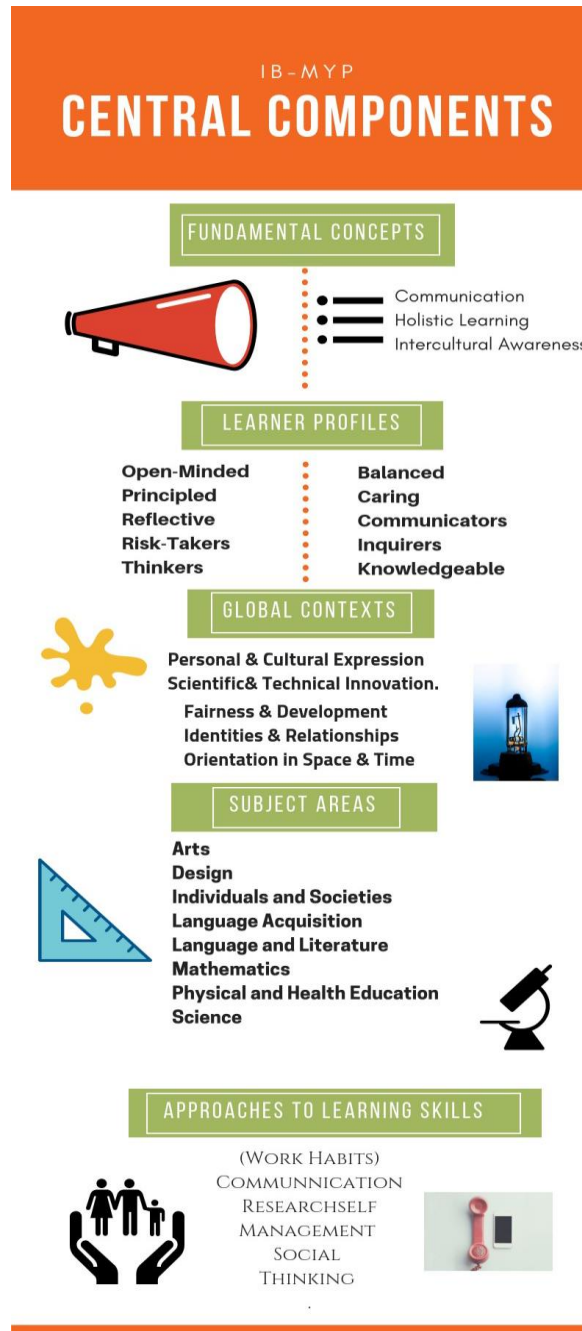
What is International Baccalaureate (IB)?

IB learners strive to become inquirers, knowledgeable, thinkers, communicators, principled, open-minded, caring, risk-takers, balanced and reflective. These attributes represent a broad range of human capacities and responsibilities that go beyond intellectual development and academic success. This is the IB's educational philosophy.



“CLPMS is small enough to know my child by name. They offer a variety of classes that challenge her in honors classes, advanced math and leadership. I like that the school encourages students in 6th, 7th, and 8th to work together. She is gaining a real-world perspective and supported through the challenges of middle school by a very dedicated and knowledgeable group of teachers and staff.”

IB-MYP Central Components



Cache La Poudre International Baccalaureate Middle School

“Cache La Poudre Middle School is a school where respect, rigor, relevance, responsibility and relationships drive learning”.



Cache La Poudre Middle School an IB World School since July 2014!

Our vision is brought to life through River Week, 6th and 7th Service in Action Days and 8th grade Community Projects.